



GD Hydraulics

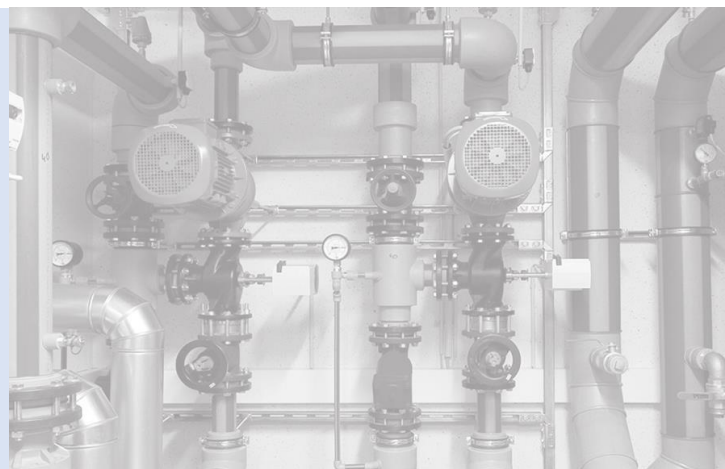
Testing & Control

PRESSURE-LOG DATASHEET



Specialists in Manufacturing, Supplying and
Renting Hydraulic Equipment

PRESSURE-LOG DATASHEET



Specialists in Manufacturing, Supplying and
Renting Hydraulic Equipment

PRESSURE-LOG RANGE

Conventional equipment such as digital and circular chart recorders require dangerous high pressures to be connected to the product logging the pressure, providing a risk to the operator. The Pressure-Log is designed to receive an electrical signal to log the pressure so the operator can be away from any pressure and potential risks.

With a touchscreen HMI and built in software the Pressure-Log also offers the ability to generate professional test certificates making it a great option to improve quality without the need to purchase expensive new testing equipment.

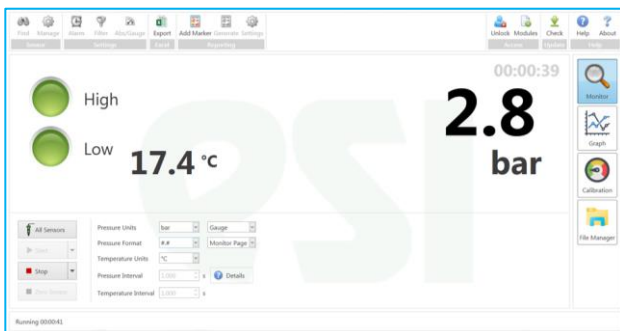
Improve safety, accuracy and quality of pressure testing with our Pressure-Log range

Key Features

- ✓ 10" touch screen Rugged HMI
- ✓ Certificate Generator Software
- ✓ Wi-Fi/3G enabled as standard
- ✓ Windows 10 included for ease of use
- ✓ Monitor and Real Time Pressure Graph Screens
- ✓ Housed in a Robust IP68 rated Peli-Case
- ✓ Pressures up to 5,000 Bar (72,500psi)
- ✓ Mains/Battery operated for remote testing
- ✓ Option of up to 8 test pressures recorded at any one time



Easy to use software:



Monitor Screen



Test Chart Screen

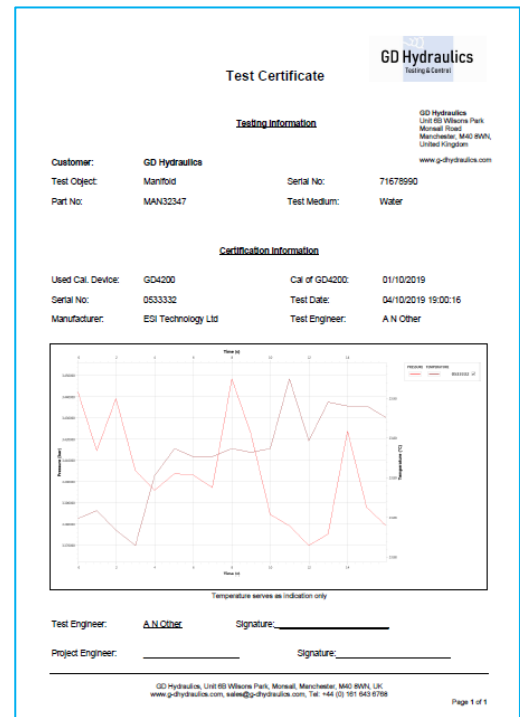


PRESSURE-LOG RANGE

Generate custom designed and calibrated test certificates to include your company logo

Software Features:

- Customisable Certificate Template
- Add your company logo to make your test certificate look more professional
- Windows 10/Microsoft Office gives the platform to email customers certificates direct from the test area
- Data can be exported to Excel
- Log both pressure and temperature
- Auto-pan chart which adjusts automatically for the pressure and length of the test
- 0.15% Accuracy as standard



Example Certificate

Model Numbers:

| Model Number | Max Pressure | |
|-------------------|--------------|---------|
| | PSI | BAR |
| PRESSURE-LOG-2.5 | 0-36 | -1-2.5 |
| PRESSURE-LOG-16 | 0-230 | 0-16 |
| PRESSURE-LOG-100 | 0-1,450 | 0-100 |
| PRESSURE-LOG-400 | 0-5,800 | 0-400 |
| PRESSURE-LOG-1000 | 0-14,500 | 0-1,000 |
| PRESSURE-LOG-1500 | 0-21,750 | 0-1,500 |
| PRESSURE-LOG-2000 | 0-29,000 | 0-2,000 |
| PRESSURE-LOG-36 | 0-58,000 | 0-4,000 |



Company Profile

GD Hydraulics are a manufacturer who specialise in sale, service, rental and repair of Hydraulic and Gas Pressure Testing, Flushing & Control Systems.

G-D Hydraulics offer equipment which includes:

- **Air Operated Tensioner Pumps**
- **Air Operated Hydraulic Power Packs (HPUs)**
- **Hose Test Rigs**
- **Cycle Test Rigs**
- **Valve Test Benches**
- **Flushing Rigs**
- **Hydraulic Power Units – Electric Driven**
- **Hydraulic Control Panels**
- **Pressure Logging Equipment**
- **Manifolds**
- **Hose Reels & Hoses**

Our standard products are relevant over numerous industry sectors and can be used for a wide number of applications. We also offer a custom built manufacture service for those jobs that need specific and bespoke requirements.

Our manufacturing facility in Manchester allows us to build and test all equipment to ensure it reaches our customers in top quality condition.

We are committed to manufacturing the best equipment possible to allow our customers operations to run as smoothly as possible.

Specialists in Manufacturing, Supplying and Renting Hydraulic Equipment

Company Information:

GD Hydraulics
Unit 6B Wilsons Park,
Wilsons Industrial Estate,
Monsall,
Manchester,
M40 8WN

Phone: +44 161 643 6768
Email: sales@g-dhydraulics.com

Specialists in Manufacturing, Supplying and
Renting Hydraulic Equipment